



# I-15 Mobility Alliance



## The I-15 Mobility Alliance

Kevin Verre  
Nevada Department of Transportation

TBG072910201504WDC



Photo: Angela Best in Travel National Park, Utah



DRAFT

Photo: Rex USA/Getty Images



ONE REGION, ONE CORRIDOR, ONE VISION 11

From the beaches of San Diego to the resort corridor in Las Vegas and beyond to the natural wonders of Utah, the I-15 Corridor takes residents of the west on vacation, transports \$120 billion of commerce annually to/ from local communities and the global market place and delivers \$52 billion in tourism revenue to local communities.

# The Corridor



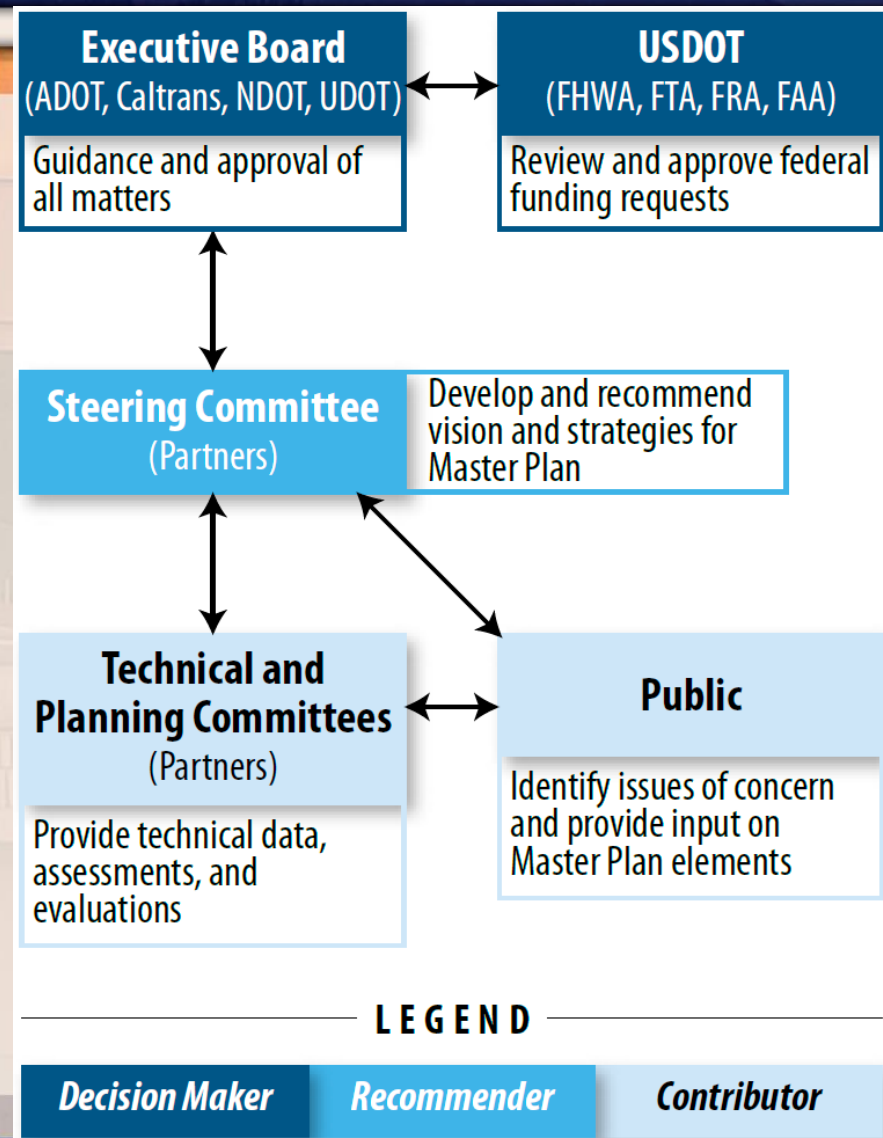




# I-15 Mobility Alliance

Moving People... Moving Goods

- **Partners include:**
  - State DOT's
  - MPO's/Transportation Agencies/Authorities
  - Cities/Counties
  - Resource Agencies
  - Private Industry
  - Non –profits
  - Academics
  - Economic Development/Commerce



TBG072910201504WDC



# Accomplishments

Moving People... Moving Goods

- Created an Alliance with 72 member agencies (over 450 folks) collaborating/cooperating like never before
- Identified 27 Immediate Projects of Inter-regional Significance – ENDORSED unanimously –updated and reduced to 22 in 2013, updated list to 25 in 2015.
- Created 16 mode and topic-specific Technical Reports
- Published in *Engineering News Record*



- Prioritized 10 years worth of projects by impact to interregional mobility and time stratified 40+ years of needs along the corridor
- Developed the Master Plan
- Endorsed 12 TIGER Grant applications– 3 Awarded
- Jointly submitted and SELECTED for a Multistate Corridor Operations and Management Federal Grant

TBG072910201504WDC





# Accomplishments: Grant Awards

Moving People... Moving Goods

**ADOT, I-15 Virgin River Gorge Bridge**  
**\$21.6 Million - TIGER 2012**



**RTC, Flamingo Corridor Improvements**  
**\$13.3 Million - TIGER 2012**



MULTISTATE CORRIDOR OPERATIONS  
AND MANAGEMENT PROGRAM

FHWA-MCOM-2011-11



APPLICANT:  
NEVADA DEPARTMENT OF TRANSPORTATION  
ON BEHALF OF THE  
I-15 MOBILITY ALLIANCE  
MULTISTATE I-15 DYNAMIC MOBILITY PROJECT



**Alliance, Dynamic Mobility Project**  
**\$1.25 Million - MCOM**



**RCTC, SR 91 Corridor Improvements**  
**\$421 Million - TIGER 3 TIFIA**

TBG07291025



# Accomplishments: IPIRS Completed/ Under Construction since 2011

Moving People... Moving Goods

## ■ Highway Bridge

1. ADOT: I-15 Virgin River Gorge Bridges
2. Caltrans: I-15/French Valley Parkway Interchange
3. RCTC: I-15/SR-91 Interchange
4. SANBAG: I-15/I-215 (Devore) Interchange Reconstruction
5. SANDAG: I-15/SR 76 East
6. NDOT: Project NEON Phase 1: I-15 from Sahara Ave to I-515/US 95 Interchange (Spaghetti Bowl)
7. UDOT: I-15 Improvements from Lehi to Draper

## ■ Intermodal Freight Distribution

1. SANDAG: Port of San Diego Freeway Access Improvements
2. SANDAG: State Route 11/Otay Mesa East Port of Entry Project

## ■ ITS/ATMS

1. Caltrans: I-15 Integrated Corridor Management Project
2. NDOT/FAST: I-15 from Craig Road to SR 604, FAST Package D
3. UDOT: Expansion of ITS Digital Backbone on I-15
4. I-15 Mobility Alliance: I-15 Dynamic Mobility Project

## ■ Interregional Corridor Planning

1. Western High-Speed Rail Feasibility Study
2. Passenger Rail Service between Southern California and Las Vegas
3. ADOT/NDOT: I-11 and Intermountain West Corridor Planning, Arizona to Nevada
4. Dixie MPO: Utah I-15 MP 0 to 16 Environmental Assessment

## ■ Tolling and Congestion Pricing

1. UDOT: I-15: HOV/HOT Lanes I-215 to Riverdale Phase 1

## ■ Transit and Rail

1. SANDAG: Mid-City Transit Projects/I-15 Corridor BRT
2. RTCNV: Flamingo BRT, Boulder Highway to Bruce Woodbury Parkway
3. RTCNV: I-15 Park and Ride Facilities, Various Locations
4. UTA: I-15 Park & Ride Facilities, Various Locations
5. UTA: Front Runner System Improvements

TBG072910201504WDC





# Path Forward for I-15 Mobility Alliance

Moving People... Moving Goods

- 2016 Update to Overall Master Plan
  - Develop updated IPIRS list
  - Develop 10-year project list - major, high priority programs that could move into future IPIRS list
  - Develop transportation policy memo
  - Develop Economic Analysis
  - Evaluate Performance Measures
- Alliance-Wide Initiative: Truck Parking & Emergency Detour Planning/Communications
- Continue coordination & planning along entire corridor



TBG072910201504WDC



# 2015 Immediate Projects of Interregional Significance List

Moving People... Moving Goods

## ■ 25 Projects in 6 categories

- Highway/Bridge
- Tolling and Congestion Pricing
- Intermodal Freight Distribution
- Transit and Rail
- Intelligent Transportation/Active Traffic Management Systems (ITS/ATMS)
- Interregional Corridor Planning



### Immediate Projects of Interregional Significance



#### Highway/Bridge Projects of Regional and National Significance (HB)

These projects focus on relieving congestion at critical locations and if/when completed could decrease regional travel time significantly resulting in the elimination of delays that cost the economy billions of dollars every year.

- |   |   |    |
|---|---|----|
| 1 | I-15: Virgin River Gorge Bridges                              | AZ |
| 2 | I-15/SR 76 East   | CA |
| 3 | I-15/French Valley Parkway Interchange                        | CA |
| 4 | Project NEON: I-15 from Sahara Ave to I-515/US 95 Interchange | NV |
| 5 | I-15 Improvements: Utah MP 0 to 16                            | UT |
| 6 | I-15/Provo 820 North Interchange                              | UT |



#### Tolling and Congestion Pricing (TCP)

Using tolling and congestion pricing as innovative funding mechanisms these projects will harness the power of the market and real time traffic demand to offer drivers a reliable trip time, and provide an additional funding stream.

- |   |  |    |
|---|--|----|
| 1 | I-15: Toll Express Lanes from Cajalco Rd to State Route 60 | CA |
| 2 | I-15: HOV/HOT Lanes I-215 to Riverdale Phase 1             | UT |



#### Intermodal Freight Distribution (IFD)

Projects that streamline and improve international, national and regional distribution of goods and benefit the economy.

- |   |   |    |
|---|---|----|
| 1 | Port of San Diego Freeway Access Improvements               | CA |
| 2 | SR-11/Otay Mesa East Port of Entry Project                  | CA |
| 3 | Apex Economic Development District: I-15/US 93 Improvements | NV |



#### Transit and Rail (TR)

Transit options decrease the overall number of vehicles using the corridor while at the same time reduce dependence on fossil fuels.

- |   |  |       |
|---|--|-------|
| 1 | San Diego Mid-City Transit Projects/I-15 Corridor BRT            | CA    |
| 2 | Passenger Rail Service between Southern California and Las Vegas | CA/NV |
| 3 | Provo/Orem BRT via University Pkwy & University Ave              | UT    |
| 4 | Front Runner System Improvements                                 | UT    |
| 5 | Orem UVU Intermodal Bridge                                       | UT    |
| 6 | Murray - Taylorsville BRT  | UT    |
| 7 | Sandy - South Jordan Circular                                    | UT    |



#### Intelligent Transportation/Active Traffic Management Systems (ITS/ATMS)

Targeted use of industry leading technology to decrease congestion and improve safety, travel times, trip reliability and emergency response times.

- |   |   |             |
|---|---|-------------|
| 1 | I-15 Corridor Management Project                            | CA          |
| 2 | I-15 from Las Vegas Valley to Mesquite: FAST Package: H     | NV          |
| 3 | Expansion of ITS Digital Backbone on I-15                   | UT          |
| 4 | I-15 Dynamic Mobility Project: Multi-State ITS Architecture | AZ/CA/NV/UT |



#### Interregional Corridor Planning (ICP)

Major long term improvements studies in the planning phase that run the gamut from transit to multimodal corridors.

- |   |  |             |
|---|--|-------------|
| 1 | Southwest Passenger Rail Planning                                | CA/NV       |
| 2 | I-15 Mobility Alliance Planning                                  | AZ/CA/NV/UT |
| 3 | I-11 and Intermountain West Corridor Planning, Arizona to Nevada | AZ/NV       |

TBG072910201504WDC





# I-15 Dynamic Mobility Project

Moving People... Moving Goods

## ■ Near-Term Priorities

- Elevate the corridor situational awareness
- Promote more proactive and coordinated responses
- Interoperability with current systems
- Support consistent and reliable corridor information to multi-state travelers
- Demonstrate value of improved coordination as a result of the project



TBG072910201504WDC



# Events on the I-15 Corridor

Moving People... Moving Goods



January 2015, Virgin River Gorge  
Bridge Construction, Arizona



September, 2014 Near Moapa, NV



January 2010, Cajon Pass, CA

May 2013, Memorial Day Weekend near Las Vegas





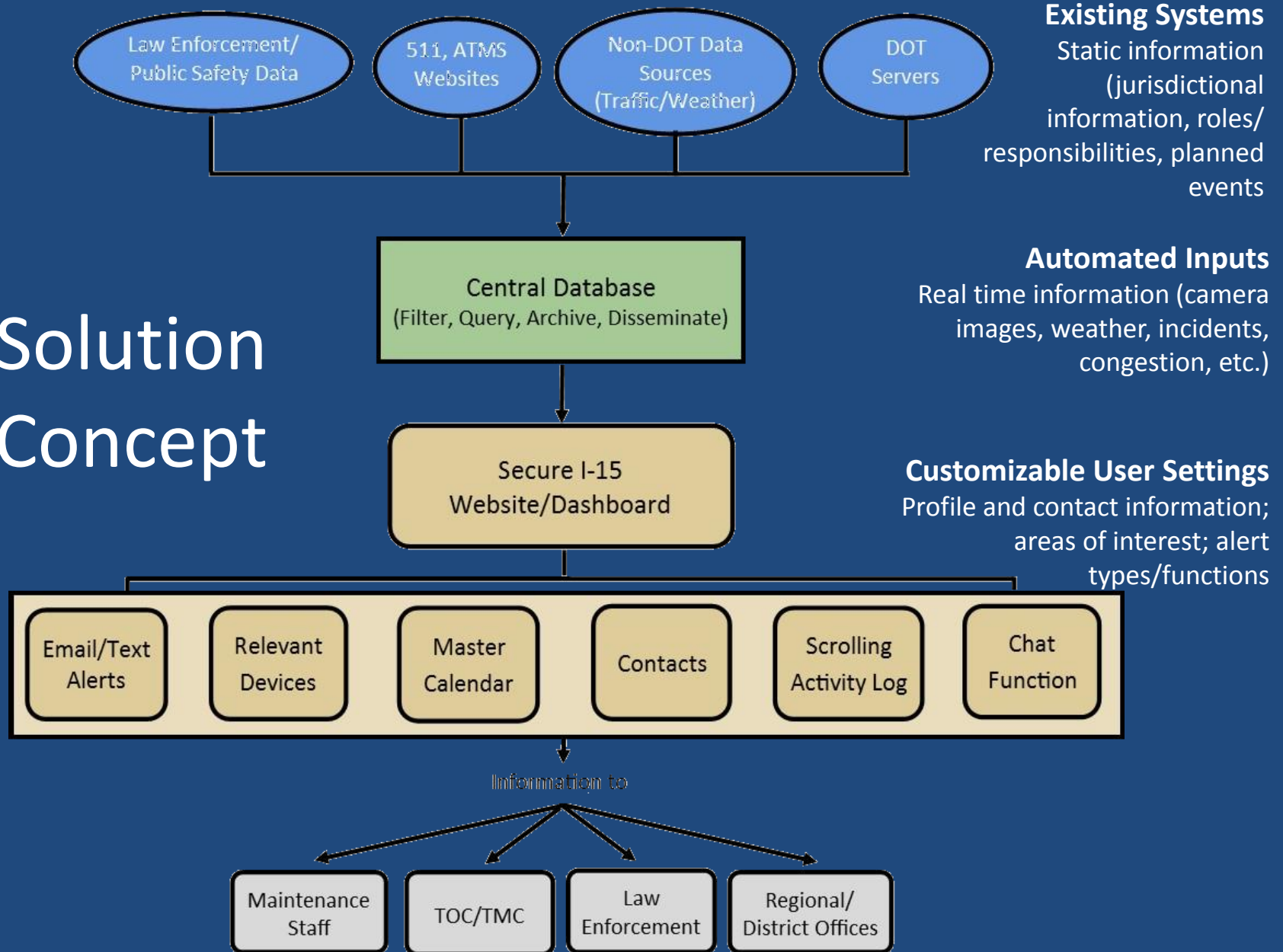
# I-15 Dynamic Mobility Project

Moving People... Moving Goods

- Operational Concept complete
  - Stakeholders indicated:
    - Decision support is not a priority – information is the priority, TMCs/TOCs will make decisions on actions
    - Did not want another traveler information website – needs marketing/awareness
    - Priority on getting information to freight
    - Improved situational awareness at TMC will result in better information pushed to travelers through existing systems
    - Coordinate with I-80 – similar stakeholders

TBG072910201504WDC

# Solution Concept





# 15 CORRIDOR CONTACT INFORMATION

UTAH	ROAD CONDITIONS	HIGHWAY PATROL	WEATHER SERVICE	TWITTER
	utahtraffic.utah.gov 1-866-511-UTAH (8224)	Murray 801-264-0520 Grem 801-234-8285 Fillmore 435-743-6530 Hurricane 435-634-2890	Salt Lake City 801-524-5133 www.utah.gov/traffic/	@UDOTTRAFFIC; @UtahDOT; @UDOTRegionOne; @UDOTRegionTwo; @UDOTRegionThree; @UDOTRegionFour

ARIZONA	ROAD CONDITIONS	HIGHWAY PATROL	WEATHER SERVICE	TWITTER
	az511.gov 1-888-411-ROAD (7623)	Kingman - District 1 928.763.5552	Flagstaff 928-556-9161 www.azusa.gov/az511	@ArizonaDOT

NEVADA	ROAD CONDITIONS	HIGHWAY PATROL	WEATHER SERVICE	TWITTER
	NDOT Nevada.com 1-877-861-ROADS (88-76237) RTC FAST RTCSNM.com; Rugatti.mfast.org	Las Vegas (702) 432-5090	Las Vegas 702-253-9744 www.azusa.gov/az511	NDOT @nevadadot RTC FAST @RTCSNM

CALIFORNIA	ROAD CONDITIONS	HIGHWAY PATROL	WEATHER SERVICE	TWITTER
	Statewide http://upholding.dot.ca.gov/ District 8 http://www.az511.org District 11 http://www.511fast.com	Banister 760-255-8750 Victorville 760-241-1186 Rancho Cucamonga 760-241-1186 Tulare 951-506-2000	San Diego 858-675-6700 www.azusa.gov/az511	District 8 @Caltrans8 District 11 @SDCaltrans

CALTRANS DISTRICT 8 UNLAD EMPLOYEES TIME	909-356-3709 (847) D8.TMC.DOT@dot.ca.gov Interchange of I-15 and SR 210 Fontana, CA
---	--

CALTRANS DISTRICT 11 TMC	951-457-3090 (847) TMC.D11@dot.ca.gov 7853 Capistrano Rd San Diego, CA 92111 PRIMARY CONTACT: Gerald Chisler, Region Operations Branch Chief 951-519-3752 SECONDARY CONTACT: Lina Saff, Operations Lead Engineer 951-519-5203
-----------------------------	---

SARAGAS	951-229-0000 (M-F, 8am-5pm) jpk@saragas.org 4018 Stewart, Suite 800 San Diego, CA 92107
---------	---

NAME OF STATION	AGENCY	GENERAL #	PRIMARY CONTACT	HOURS OF OPERATION	NAME OF STATION	AGENCY	GENERAL #	PRIMARY CONTACT	HOURS OF OPERATION	NAME OF STATION	AGENCY	GENERAL #	PRIMARY CONTACT	HOURS OF OPERATION
1. Kearney Mesa	Caltrans D11	Call D11 TMC		M-F, 8am-5pm	12. Frederita	ADOT	Flagstaff			23. Chant/Provo	UDOT Region 3	801-429-4705	Chant	801-429-4705
2. Escalante	Caltrans D11	Call D11 TMC			13. Panguitch	UDOT Region 4	435-627-8643	Ersk		24. Lahi	UDOT Region 3	801-788-9651	Marshall	801-657-5137
3. Elmore	Caltrans D5	Call D6 TMC	951-674-2557	M-F, 7am-3:30pm	14. Cedar City	UDOT Region 4	435-586-2103	Ersk	435-586-2103	25. Salt Lake South	UDOT Region 2	801-523-2632	Ran	801-910-2220
4. Corona	Caltrans D5	Call D6 TMC	951-272-0628	M-F, 7am-3:30pm	15. Panguitch	UDOT Region 4	435-477-3415	Ersk	435-477-3415	26. Murray	UDOT Region 2	801-266-4923	Ran	801-910-2220
5. Riverside	Caltrans D5	Call D6 TMC	951-685-4099	M-F, 8am-5pm	16. Beaver	UDOT Region 4	435-438-2524	Ersk	435-438-2524	27. Salt Lake East	UDOT Region 2	801-973-3272	CL	801-910-2220
6. San Bernardino	Caltrans D5	Call D6 TMC		M-F, 8am-5pm	17. Cove Fort	UDOT Region 4	435-438-5683	Ersk	435-438-5683	28. Centerville	UDOT Region 1	801-295-3576	Ran	801-910-2220
7. Cajon	Caltrans D5	Call D6 TMC	760-249-3277	M-F, 7am-3:30pm	18. Mesquite	UDOT Region 4	435-842-7165	Ersk	435-842-7165	29. Clearfield	UDOT Region 1	801-425-0251	Ran	801-791-3573
8. Victorville	Caltrans D5	Call D6 TMC	760-241-2321	M-F, 7am-3:30pm	19. Scripps	UDOT Region 4	435-758-2453	Ersk	435-758-2453	30. Ogden	UDOT Region 1	801-394-2234	Ran	801-940-2529
9. Banister	Caltrans D5	Call D6 TMC	760-252-2313	M-F, 7am-3:30pm	20. Wright	UDOT Region 3	435-625-1717	Ersk	435-625-1717	31. Brigham City	UDOT Region 1	435-723-5704	Uyell	435-250-4560
10. Mountain Pass	Caltrans D5	Call D6 TMC	760-858-2282	M-F, 7am-3:30pm	21. San Juan	UDOT Region 3	801-754-3951	Ersk	801-754-3951	32. Wendover	UDOT Region 1	435-458-3791	Ran	435-279-3126
11. Glendale	NDOT D1				22. Spanish Fork	UDOT Region 3	801-796-4199	Ersk	801-796-4199					



## I-15 Contact Map

- Interim resource
- Contact info for TMCs, traveler information sites, maintenance
- This information will be migrated into the DMP system





# Project Information / Contacts

Moving People... Moving Goods

For more information visit [www.i15alliance.org](http://www.i15alliance.org)



or contact:

**Kevin Verre**

Office: (775) 888-7712

Email: [kverre@dot.state.nv.us](mailto:kverre@dot.state.nv.us)