



UNITED STATES
DEPARTMENT OF TRANSPORTATION
Office of Intelligence, Security and Emergency Response (S-60)

USDOT Response Update

WASHTO Committee on Highway Transport
Orange, CA
October, 2016

Michael W. Lowder
Director
Office of Intelligence, Security, and Emergency Response
United States Department of Transportation

August 2015



Emergency Support Function 1

- Monitor and report status of and damage to the transportation system and infrastructure
- Identify temporary alternative transportation solutions that can be implemented by others
- Perform activities conducted under the direct authority of DOT elements
- Coordinate the restoration and recovery of the transportation system and infrastructure
- Coordinate and support prevention, preparedness, response, recovery, and mitigation activities among transportation stakeholders



ESF-1: Regional Personnel

DOT HQ, Washington, DC
 NRPM: **Jeremy Greenberg**
 DRPM: David Schilling
 Operational Planner: Alex Appel

Region X, Seattle
 RETCO: David Suomi
 RETREP: David Ochs

Region VIII, Denver
 RETCO: Rick Suarez
 RETREP: Ron Williams

Region V, Chicago
 RETCO: John Rohlf
 RETREP: Jeff McSpaden

Region I, Boston
 RETCO: Mary Beth Mello
 RETREP: Terry Sheehan

Region AK, Anchorage
 RETCO: David Suomi
 RETREP: Cindy Sacks

Region IX, Oakland, CA
 RETCO: David Suomi
 RETREP-N: **Bob Brown**
 RETREP-S: **Judy Babbitt**

Region II, New York
 RETCO: Diane Crean
 RETREP: Jim Robinson

Region III, Philadelphia
 RETCO: Pearlis Johnson
 RETREP – **Lisa Brennan**

Region IV, Atlanta
 RETCO: Pearlis Johnson
 RETREP: Leah Russell

Region VI, Fort Worth
 RETCO: Michael O'Harra
 RETREP: Gary Barber

Northern
 Marianna
 Islands

Hawaii

Guam

American
 Samoa

Puerto Rico

U.S.
 Virgin
 Islands

USDOT Capabilities

Technical Assistance

- NRP Personnel
- Air Navigation Services
- Evacuation Liaison Team
- Joint Damage Assessment Teams
- Emergency Relief Funding

Regulatory Relief

- Federal Motor Carrier Waivers
- HazMat Special Permits
- Oversize/Overweight Permits (facilitate)
- Toll Relief (facilitate)
- Temporary Flight Restrictions
- Railroad Inspection Relief
- Jones Act Waiver Concurrence

Assets

- MARAD Ready Reserve Force
- Operation SafeStor
- Mobile Air Navigation Services assets
- Washington Flight Program

Recent Operational Activities

Incidents:

- South Central US Flooding (March 2016)
- Tropical Cyclone Amos - American Samoa (April 2016)
- Louisiana Flooding (August 2016)
- Hurricane Matthew (October 2016)

Exercises:

- Vibrant Response 2016
- Eagle Horizon 2016
- Cascadia Rising

National Special Security Events (NSSEs)

- State of the Union NSSE (January 2016)
- Nuclear Security Summit NSSE (March – April 2016)
- Republican & Democratic National Conventions (July 2016)



Program Area Updates



Ongoing Efforts

Assistance to State & Local Officials

New Efforts

Transportation Emergency Response Factsheets (TERFs)



Transportation Emergency Response Factsheets: TERFs


- Not intended to replace other documents
- Quick reference guide for NRP personnel
AND partner agencies
- Single sheet with basic information and links
for additional information
- Available on www.dot.gov/emergency

USDOT Emergency Website

- DOT has a website to assist public and private sector transportation stakeholders during emergency situations – a **One - Stop Shop**
- The website has information related to transportation permits, waivers, and other regulations and authorities that are applicable during an emergency

www.dot.gov/emergency

USDOT Emergency Website

 **Transportation.gov**
U.S. Department of Transportation

▼ About DOT ▼ Our Activities ▼ Areas of Focus

Home > Emergency

DOT Emergency Preparedness, Response, and Recovery Information

During emergency situations, DOT will post information related to transportation permits, waivers, and other regulations and authorities that are applicable during an emergency. Under the National Response Framework, DOT is the primary federal agency for the Emergency Support Function -1 Transportation (ESF-1).

DOT Modal Information

Aviation

- Federal Aviation Administration (FAA) Temporary Flight Restrictions
- FAA Flight Delay Information
- FAA Notice to Airman

Maritime

- Maritime Administration Ready Reserve Force (RRF)
- RRF Characteristics Pamphlet
- RRF Locations Map

Pipelines and Hazmat

Related Links

- Ready.gov: Plan, Prepare, and Stay Informed

Related Documents

- National Response Program Contact List
- USDOT Recovery Resource Guide
- Maritime Emergency Response Guide

Transportation Emergency Response Factsheets (TERF)

- TERF 1: National Response Program
- TERF 2: Regulatory Relief
- TERF 3: Aviation
- TERF 4: Maritime
- TERF 5: Surface

Contact Us

Office of Intelligence, Security and Emergency Response
1200 New Jersey Ave, SE
Washington, DC 20590
United States
Emergency@dot.gov

Share

Emergency Waivers

Significant Federal Motor Carrier Waivers

- General Requirements (e.g., recordkeeping, vehicle marking)
- Driver Qualifications (e.g., physical standards, English language proficiency)
- Driving of CMVs (e.g., pre-trip inspection, fatigued operation)
- Parts and Accessories (e.g., lighting, cargo securement)
- Hours of Service (e.g., 11-hour driving limit, 14-hour on-duty limit)
- Inspection, Repair and Maintenance (e.g., post-and annual trip inspections)

Emergency Waivers

The following are NOT exempt:

- Drug and alcohol testing
- CDL requirements
- Insurance requirements
- Hazardous materials regulations
- State vehicle registration requirements
- Household goods movers- consumer protection regulations, and
- Other Federal commercial regulations

Emergency Waivers

- **State of Emergency**
 - States normally put a process in place to expedite the permitting process.
- ***Toll Waivers***
 - Toll waivers are up to each individual State and/or toll authority.
- ***Truck/Weigh Station Bypass***
 - States can make a judgement call to allow certain vehicles to bypass the truck/weigh stations based on the configurations of known vehicles during emergency and disaster response.

Emergency Waivers

- **OVER SIZE – OVER WEIGHT**



Emergency Waivers

- **OVER SIZE – OVER WEIGHT**

- **State Authority**

- Route Specific
 - Daytime / Nighttime restrictions / limits

- **Coordination With Neighboring States**

Emergency Waivers

- International – Cross Border Movements
 - Coordination with CBP/ICE
 - Border Interagency Executive Council (BIEC)
 - Military Transportation
 - Disaster Transportation
 - Civilian / Commercial Transportation
 - Coordination with Transport Canada
 - Coordination with Mexico
 - Coordination with NATO

Emergency Response

- CHALLENGES
 - Weather Events
 - Flooding
 - Non Weather Events
 - Fukushima
 - Ebola
 - Zika
 - Zoomantic Diseases

Emergency Response

- CHALLENGES
 - Security Concerns / Issues
 - Response vs Return Trip
 - Tolls
 - Hours of Service
 - Weigh Station

Emergency Response Waiver Information

- For information relating to USDOT Regulatory Relief, visit www.dot.gov/emergency

— www.transportation.gov/emergency
- Toll free hotline number at **1-877-831-2250** for inquiries pertaining to FMCSA regulations during a declared disaster.



Transportation Working Group (TPTWG)

**Emergency Preparedness Working Group
(EPWG)**

APEC

Global Supply Chain Resilience

Global Supply Chain Resilience

Key Principals

- 1) Disaster Risk Management & Hazard Mapping
- 2) Planning & Business Continuity Management
- 3) Policy & Regulations
- 4) Regional Cooperation
- 5) Critical Infrastructure
- 6) Human Resources Capacity Management
- 7) Information Sharing

New Efforts

ZIKA Virus &

Transportation Impacts



New Efforts

TRANSITION



New Efforts

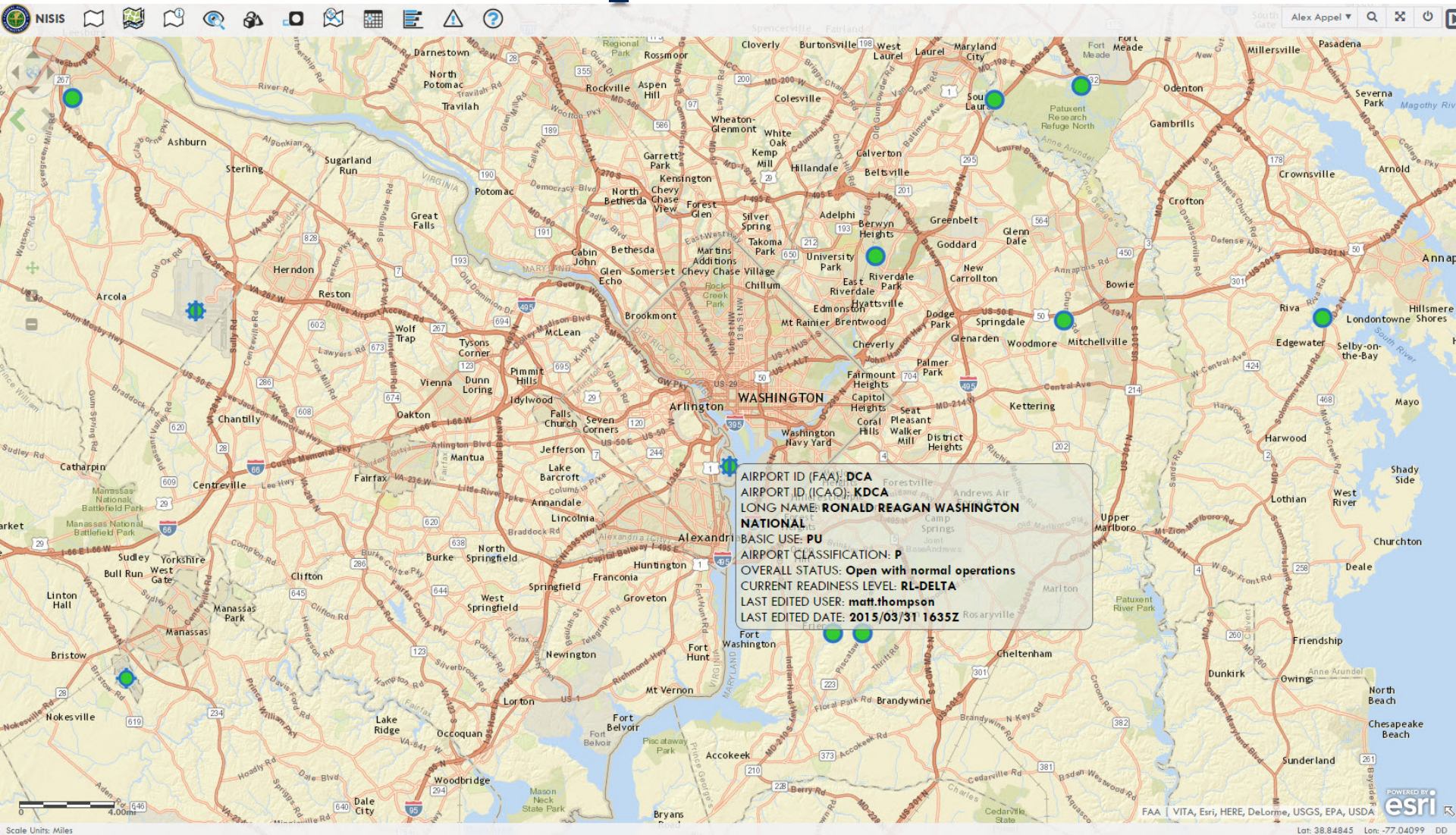
Hanjin Shipping Bankruptcy Issues



Ongoing Efforts

DOTMAP

Airport Status



Office of Intelligence, Security, and Emergency Response
USDOT Update for AASHTO

August 2015



United States
Department of Transportation

Intelligence

- Intelligence briefings and threat assessments for Secretary and DOT Sr. Leadership.
- Intelligence products to support Industry and State & Local transportation officials.
- Insider Threat / Counter Intelligence workshops.
- NJTTF & EPIC coordinating with Federal and State Law Enforcement.
- Open door policy, allowing for reoccurring visits by, cleared Amtrak and other Industry security analysts.

Security Policy

1. DOT and FEMA are co-chairs for an effort to develop a National Mitigation Investment Strategy.
2. DOT implementation of 2015 Transportation Systems Sector-Specific Plan activities
3. DOT is engaged in efforts to develop Community Resilience Indicators
4. Federal Flood Risk Management Standard

International Preparedness

- NATO's Science for Peace and Security - assist Ukraine with Transportation Disaster Preparedness
- Continuing our work with China's Ministry of Transport (MOT) on Safety and Disaster Preparedness
- Asian Pacific Economic Corporation (APEC) on Transportation Supply Chain & Resilience
- Brazil and Israel – international transportation disaster preparedness
- USAID - International Transportation Assessment Team
- Emergency Preparedness Committee for Civil Transportation - Transport Canada (EPCCT)

On Going Efforts



Transportation History



Stow High In Transit

Transportation History

Thus evolved the term

S. H. I. T.

(Stow High In Transit)

One of the first HazMat Regs.

And you thought it was a swear word

Contact Information

Michael W. Lowder

Director, Office of Intelligence, Security,
and Emergency Response

Email: Michael.Lowder@dot.gov

Phone: 202-366-6525